

GREGORY HILLS HEALTH HUB

LANDSCAPE DEVELOPMENT APPLICATION DOCUMENTATION (DA)

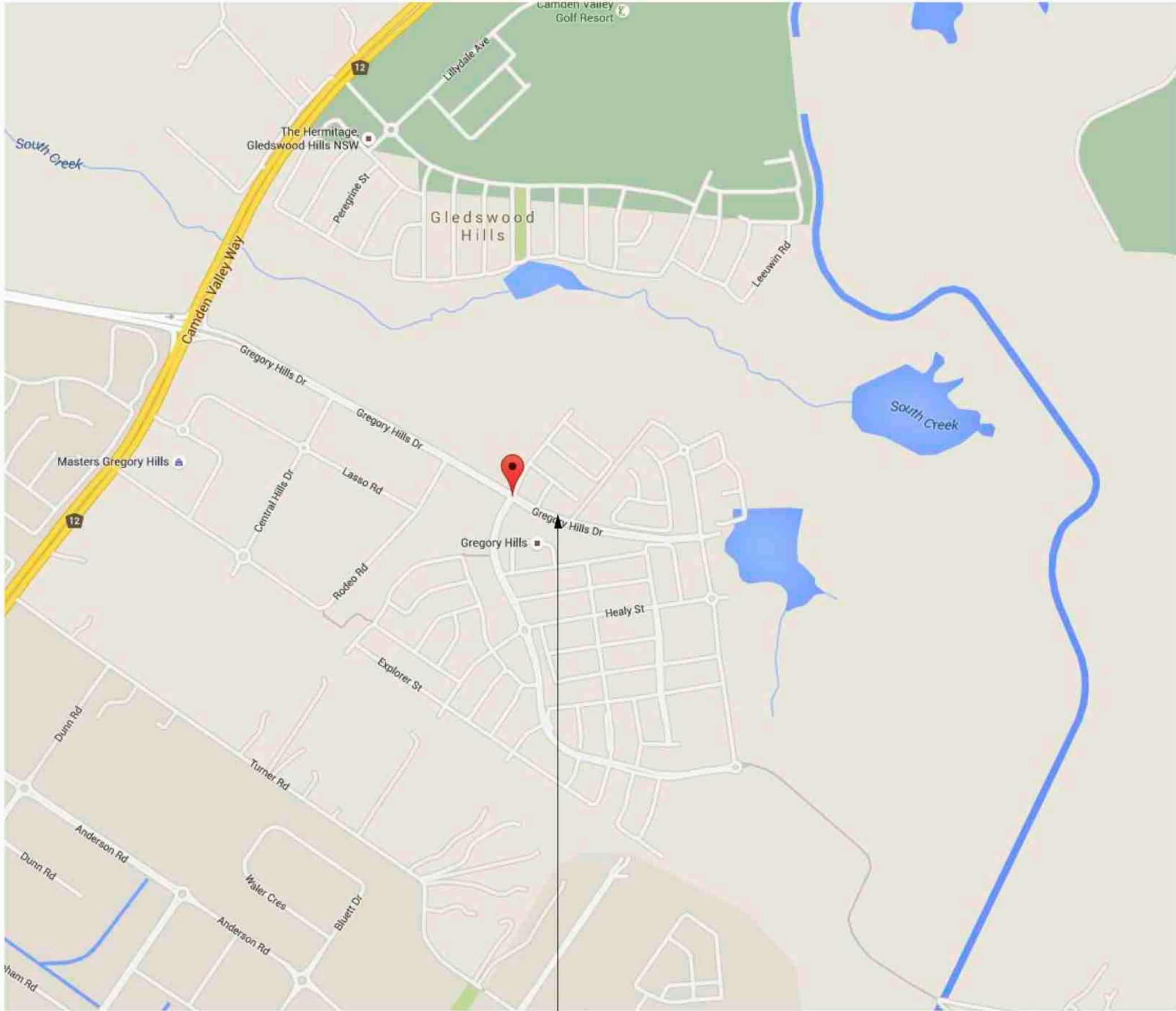
CNR GREGORY HILLS DRIVE & HOLBORN CIRCUIT

DRAWING SCHEDULE

DWG NO.	DRAWING TITLE	ISSUE	DATE
LP01	COVER SHEET	D	18.03.16
LP02	LANDSCAPE PLAN-NORTH	D	18.03.16
LP03	LANDSCAPE SECTIONS	D	18.03.16
LP04	PLANT SCHEDULE & THEMING	D	18.03.16



SITE PLAN SCALE 1:500 @ A1



GREGORY HILLS DRIVE
LOCALITY PLAN NTS: GOOGLE MAPS 2015



- LEGEND**
- Site Boundary
 - Indicative existing street trees - to be retained
 - Proposed buildings
 - Proposed Paving - refer to architect's drawing
 - Proposed Concrete or Paving - refer to architect's drawings
 - Proposed Turf
- TREES**
- Pyrus calleryana* 'Capiatal' (Ornamental Pear)
 - Pyrus calleryana* 'Chanticleer' (Ornamental Pear)
 - Corymbia maculata* (Spotted Gum)
 - Cupaniopsis anacardioides* (Tuckeroo)
 - Tristanopsis laurina* (Water Gum)
 - Waterhousia floribunda* (Weeping Lilly Pilly)
 - Cafe Orchard Trees: Cirtus Macadamia Pear
- SCREENING**
- Elaeocarpus reticulatus* (Blueberry Ash)
 - Elaeocarpus eumundii* (Smooth Quandong)
- ACCENT PLANTS**
- Doryanthes excelsa* (Gymea Lily)
 - Phormium tenax* (NZ Flax)
- SHRUBS**
- Westringia fruticosa* (Coastal Rosemary)
 - Raphiolepis indica* 'Snow Maiden' (Indican Hawthorne)
 - Philodendron xanadu* (Philodendron)
- GROUNDCOVERS**
- Lomandra tanika* (Mat Rush cv)
 - Liriope muscari* (Giant Liriope)
 - Dianella revoluta* 'Little Rev' (Dianella)
 - Myoporum parvifolium* (Creeping Boobialla)
 - Trachelospermum jasminoides* (Star Jasmine)
 - Grevillea* cv 'PoorindaRoyal Mantle' (Creeping Grevillea)
- SWALE GRASSES**
- Carex appressa* (Tall Sedge)
 - Juncus usitatus* (Tussock Grass)
 - Lomandra longifolia* (Mat Rush)

LANDSCAPE PLAN SCALE 1:250@A1



Studio 1, 88 Fern Street | PO Box 111
Islington NSW 2296
Phone (02) 4965 3500 Fax (02) 4965 3555
admin@moirlandscapearchitecture.com.au
www.moirlandscapearchitecture.com.au

DRAFT	02.10.15	DRAFT LANDSCAPE DA PLANS FOR REVIEW
A	12.10.15	LANDSCAPE DA PLANS FOR SUBMISSION
B	19.10.15	LANDSCAPE DA PLANS FOR SUBMISSION
C	26.10.15	LANDSCAPE DA PLANS FOR SUBMISSION
D	18.03.16	LANDSCAPE DA PLANS FOR SUBMISSION

PROJECT: GREGORY HILLS HEALTH HUB

CLIENT: CYRE PTY LTD

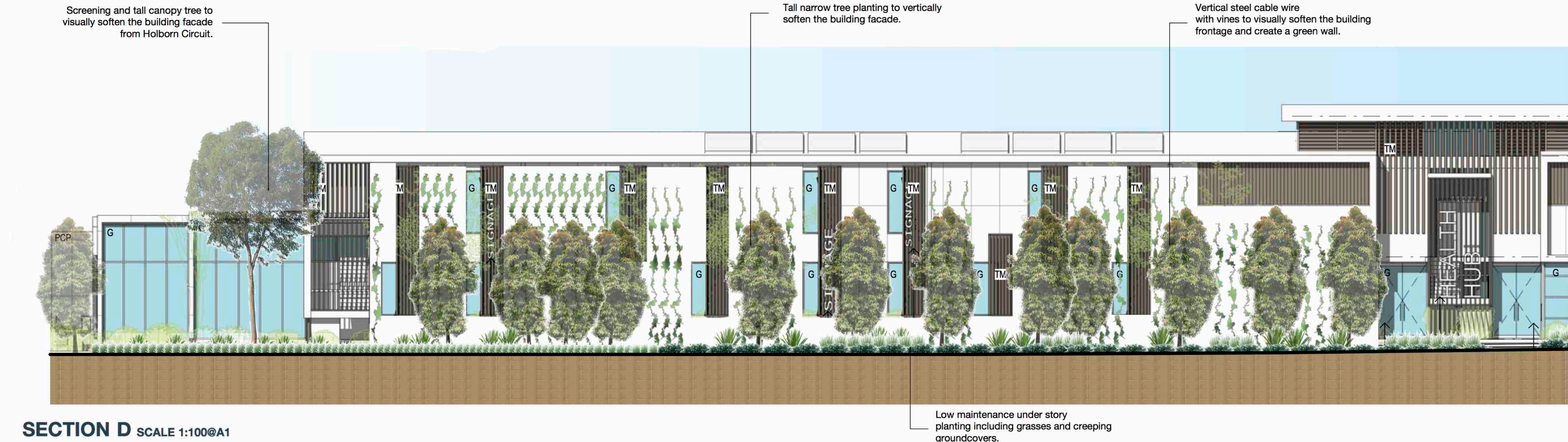
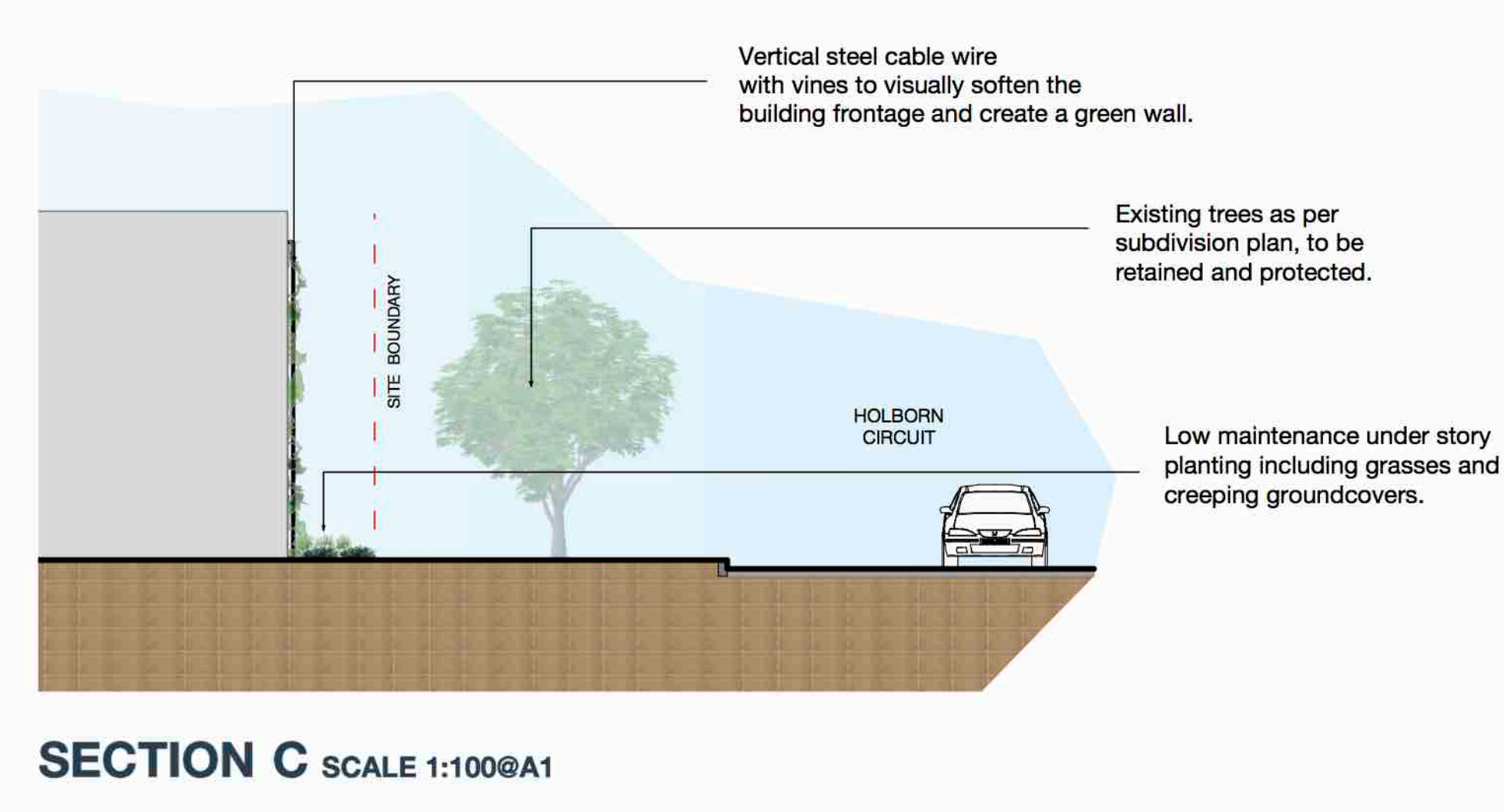
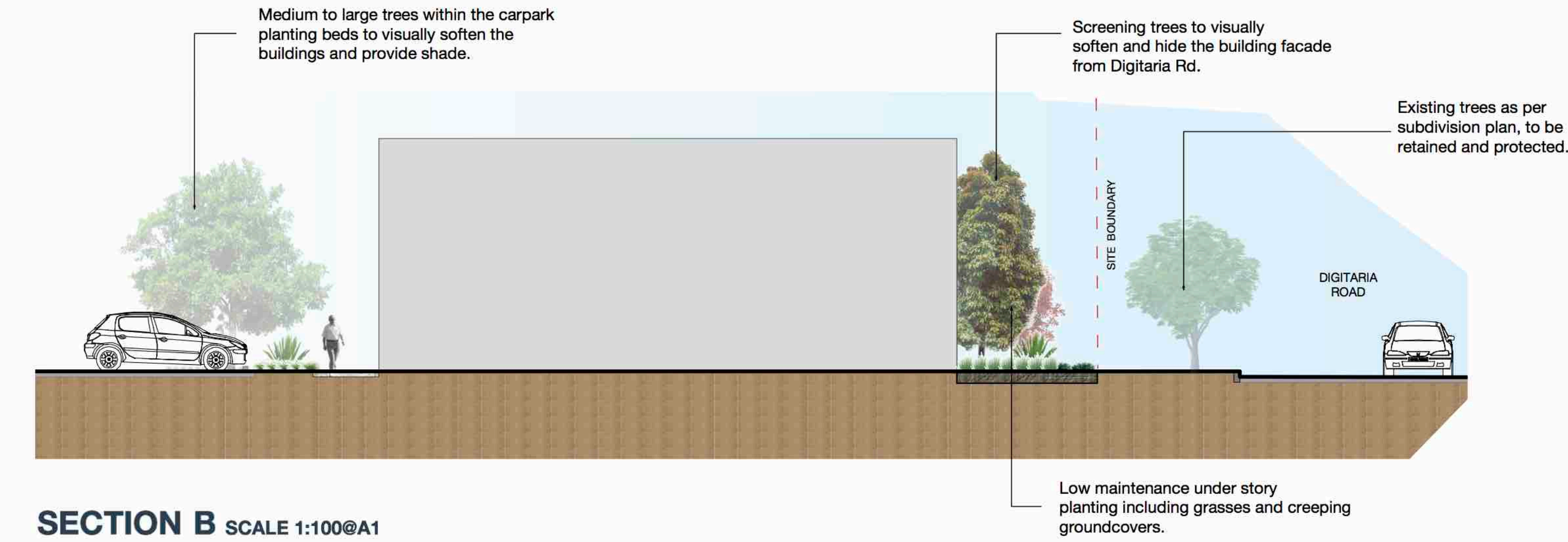
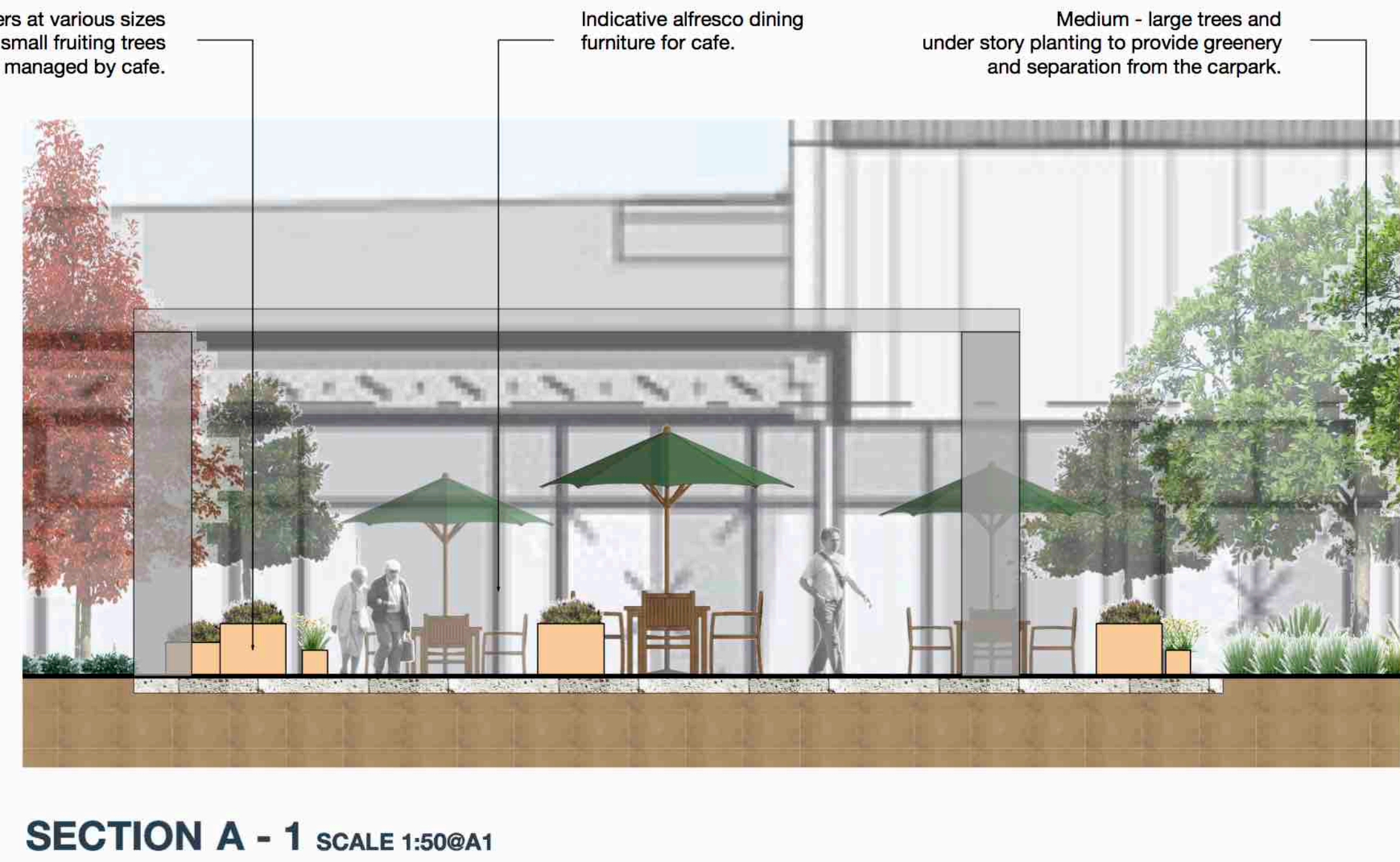
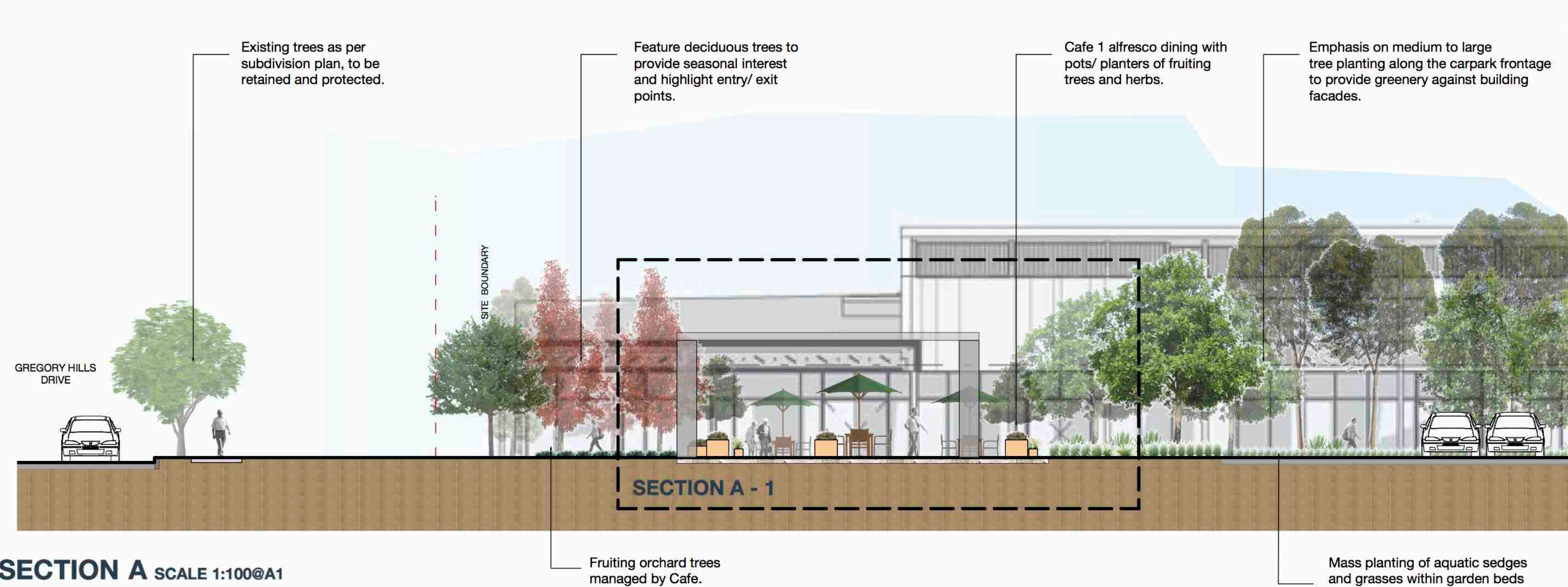
STATUS: FOR SUBMISSION

DRAWING: LANDSCAPE PLAN

PROJECT NUMBER: 1248

SHEET: 2 OF 4

DRAWN BY: CB	CHECKED BY: MC	APPROVED BY: DM
SCALE: AS SHOWN @ A1	REV: D	DRAWING: LP02
DATE: 18.03.16		



DRAFT	02.10.15	DRAFT LANDSCAPE DA PLANS FOR REVIEW
A	12.10.15	LANDSCAPE DA PLANS FOR SUBMISSION
B	19.10.15	LANDSCAPE DA PLANS FOR SUBMISSION
C	28.10.15	LANDSCAPE DA PLANS FOR SUBMISSION
D	18.03.16	LANDSCAPE DA PLANS FOR SUBMISSION

PROJECT:		DRAWING:	
GREGORY HILLS HEALTH HUB		SITE SECTIONS	
CLIENT:		PROJECT NUMBER:	
CYRE PTY LTD		1248	
STATUS:		SHEET:	
FOR SUBMISSION		3 OF 4	

DRAWN BY:	CHECKED BY:	APPROVED BY:
CB	MC	DM
SCALE:	REV:	
AS SHOWN @ A1	D	
DATE:	DRAWING:	
18.03.16	LP03	

TREES



Waterhousia floribunda
Weeping Lily Pilly



Corymbia maculata
Spotted Gum



Cupaniopsis anacardioides
Tuckeroo



Tristaniopsis laurina 'Luscious'
Water Gum



Elaeocarpus reticulatus
Blueberry Ash



Elaeocarpus eumundi
Smooth Quandong



Pyrus calleryana 'Chanticleer'
Flowering Pear



Pyrus calleryana 'Captial'
Flowering Pear

SHRUBS



Westringia fruticosa 'Jervis Gem'
Coast Rosemary Cv.



Raphiolepis indica 'snow maiden'
Indian Hawthorne



Acacia cogata 'Limelight'
Dwarf Acacia

ACCENT PLANTS



Doryanthes excelsa
Gynea Lily



Phormium tenax
NZ Flax

GROUNDCOVERS



Grevillea
Grevillea Poorinda Royal Mantle



Lomandra longifolia 'Tanika'
Matt Rush Cv.



Trachelospermum jasminoides '
Chinese Star Jasmine Cv.



Myoporum parvifolia
Creeping Boobialla



Liriope 'Evergreen Giant'
Evergreen Giant

SWALE SEDGES



Carex appressa
Tussock Grass



Juncas usitatus
Saw Sedge

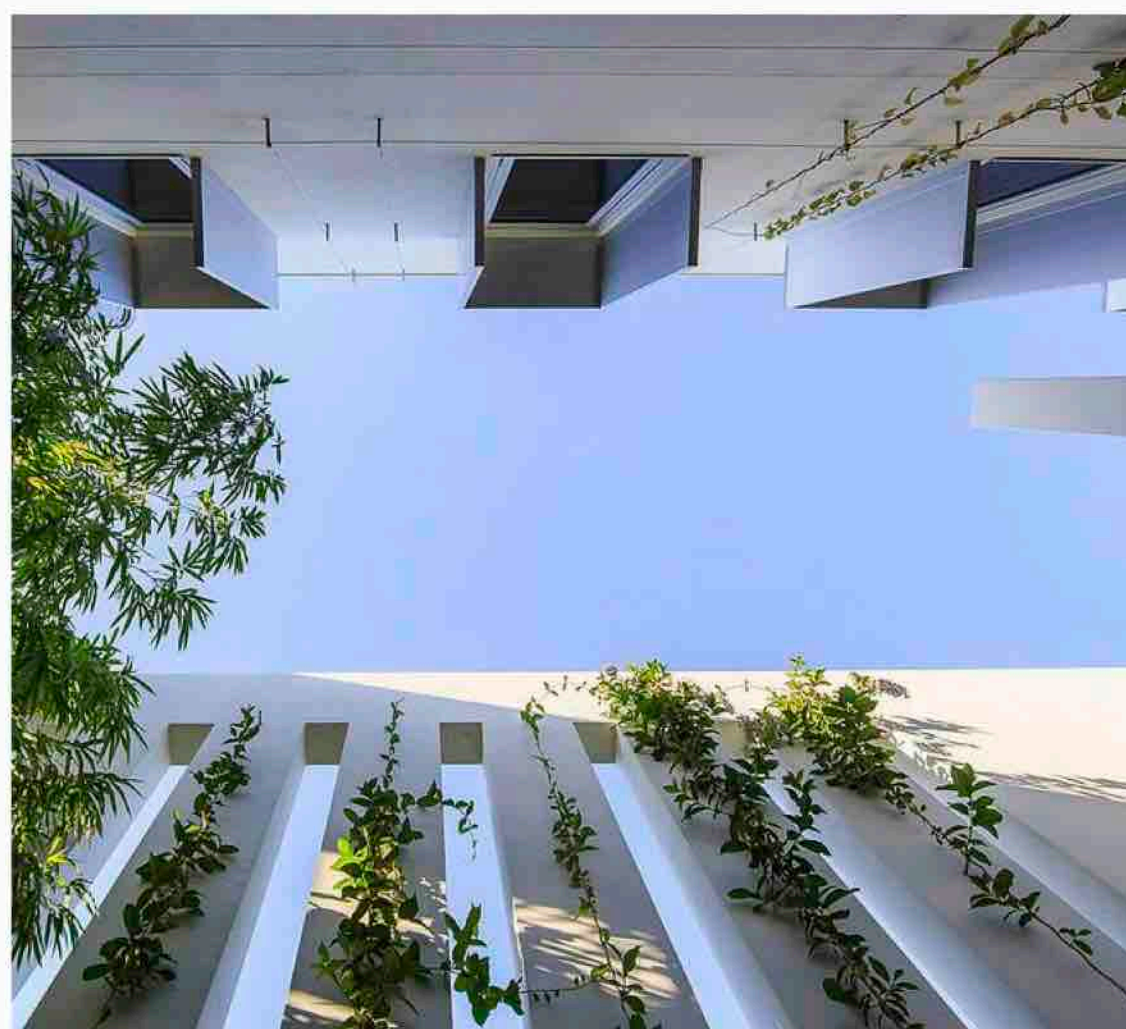
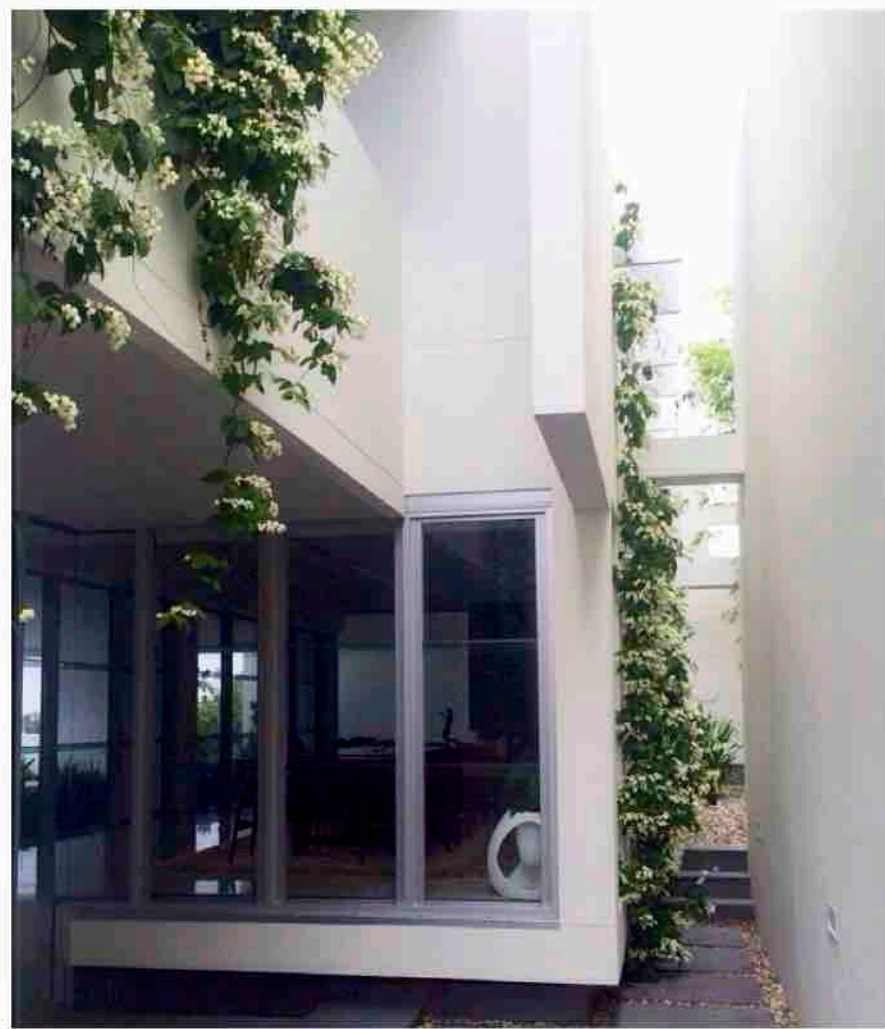


Lomandra longifolia
Mat Rush

WSUD CARPARK GRASSES



VERTICAL CABLE WIRE & VINES



PLANT SCHEDULE

Code:	Botanical Name:	Common Name:	Pot Size:	Spacing:
Trees:				
ELA eum	<i>Elaeocarpus eumundii</i>	Smooth Leaved Quandong	100L	As Shown
ELA ret	<i>Elaeocarpus reticulatus</i>	Blueberry Ash	100L	As Shown
PYR cal	<i>Pyrus calleryana</i> 'Chanticleer'	Ornamental Pear	75L	As Shown
PYR CAP	<i>Pyrus calleryana</i> 'Captial'	Ornamental Pear	75L	As Shown
COR mac	<i>Corymbia maculata</i>	Spotted Gum	100L	As Shown
CUP ana	<i>Cupaniopsis anacardioides</i>	Tuckeroo	100L	As Shown
TRI lau	<i>Tristaniopsis laurina</i>	Watergum	75L	As Shown

Shrubs:				
WES fru	<i>Westringia fruticosa</i>	Coastal Rosemary	200mm	As Shown
ACA cog	<i>Acacia cognata</i> 'Limelight'	Dwarf Acacia	200mm	As Shown
PHI xan	<i>Philodendron xanadu</i>	Philodendron	200mm	As Shown
RHA ind	<i>Raphiolepis indica</i> 'Snow Maiden'	Indian Hawthorne	140mm	As Shown

Accent Plants:				
DOR exc	<i>Doryanthes excelsa</i>	Gynea Lily	140mm	As Shown
PHO ten	<i>Phormium tenax</i> 'Rubra'	NZ Flax	140mm	As Shown

Groundcovers:				
MYO por	<i>Myoporum parvifolium</i>	Creeping Boobialla	140mm	4/m2
LOM con	<i>Lomandra tanika</i>	Mat Rush Cv	140mm	4/m2
TRA jas	<i>Trachelospermum jasminoides</i>	Star Jasmine	140mm	3/m2
GRE poo	<i>Grevillea</i> cv ' PoorindaRoyal Mantle'	Grevillea cv	140mm	3/m2
DIA rev	<i>Dianellea revoluta</i> 'Little Rev'	Blue Flax Lily		